

2026-27



Sixth Form **Curriculum Guide**



TRENT
COLLEGE



Contents

Welcome	2
What to Expect	3
10 Reasons to Choose Sixth Form	4
The Wortley Sixth Form Centre	6
Beyond the Classroom	9
Boarding	10
Careers	13
Choosing A Level and BTEC Courses	14
Frequently Asked Questions (FAQs)	16
Entry Requirements	20
Art (Fine Art) A level	23
Biology A level	24
Business Studies A level	26
Business Studies BTEC	27
Chemistry A level	29
Computer Science A level	30
Design and Technology (Product Design) A level	31
Drama and Theatre Studies A level	32
Economics A level	35
English Language and Literature A level	36
English Literature A level	37
Geography A level	38
History A level	40
Mathematics A level	41
Further Mathematics A level	42
Modern Languages (French, German, Spanish) A level	43
Music A level	45
Photography A level	46
Physical Education A level	47
Physics A level	48
Politics A level	50
Psychology A level	51
RS: Philosophy and Ethics A level	52
Sport BTEC	53



Welcome

The Sixth Form at Trent College is a high-achieving, hardworking and collaborative community of well-motivated students who are ambitious and keen to embrace the wonderful opportunities available at this school.

Each student is given the individual support, encouragement and guidance required for them to achieve their very best. For some, their academic goal is the A* and A grades that will mean they study languages at Cambridge or Medicine at Manchester, or Physics at King's but we determine success against each individual student's ambitions and goals and we work to ensure that each student has the right qualifications pathway.

Alongside this carefully chosen academic pathway, is a broad range of co-curricular opportunities

which support and encourage the development of each student's unique character and those 'soft skills' which are so valued and important in the world beyond school.

It is this breadth of opportunity, set on a beautiful campus, in a fully integrated and co-educational school which makes Trent College stand out and our students outstanding. Your time in the Sixth Form at Trent College may be short, but its legacy will last a lifetime.

Mr Paul Mayfield
Head of Sixth Form

Key Sixth Form Staff:



Mr Paul Mayfield
Head of Sixth Form



Mr Geoffrey Butler
Head of Year



Mr Calum Settingington
Head of Year

What Can I Expect?

- ✓ A warm welcome from the Year 13 students and Sixth Form team. We have around 200 students in Sixth Form, with approximately 30 students new to Trent College each year.
- ✓ A modern Sixth Form Centre, designed to be both collaborative and flexible, reflecting the way students study today.
- ✓ A personalised timetable, shaped by your subject option choices, which incorporates private study time and dedicated Games sessions to help you stay physically active.
- ✓ A personal Tutor to guide you through Sixth Form, helping you to navigate and balance the varied demands whilst you prepare for life beyond school.
- ✓ Access to a broad academic and enriching co-curriculum, designed to develop students into young adults, and to help you focus on your passions beyond the classroom.
- ✓ An expectation of becoming a role model within school, taking on leadership positions, being smartly presented in professional dress and inspiring younger pupils.



10 Reasons to Choose Trent College Sixth Form



1. Wide range of academic choices to suit your ambitions.

Tailor your individual studies to develop, stretch yourself and meet your goals. With 24 A Level and BTEC subject choices and the Extended Project Qualification (EPQ) on offer, what will you choose?



2. A track record of academic success

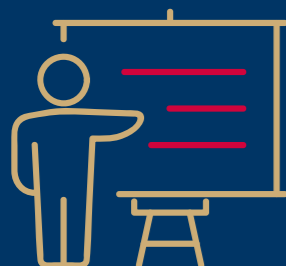
Our 2025 A Level results include

- 100% pass rate at A Level
- Over a third of all entries achieved A* or A grade (35.9%)
- More than two thirds of all entries awarded A* to B grades (68%)



3. 'Higher than Average' Value-Added progress score

Our Sixth Form has a "Higher than Average" Value-Added progress score from the Department for Education, reflecting the exceptional teaching, support, and well-balanced curriculum that empower our students to exceed expectations and achieve greater progress than their peers nationally.



4. Passionate, skilled and highly rated teachers

Our team of dedicated, experienced and passionate teachers bring learning to life and create environments where our students excel.

"The Sixth Form is academically ambitious. Results are well above the national average because of the effective support and guidance provided by teachers." ISI Inspection Report March 2025



5. Individual support, encouragement and guidance

Strong pastoral care delivered by personal Tutors, Heads of Year, a Head of Sixth Form and specialist teachers ensure that you will be supported to flourish both in and out of the classroom. Our Sixth Form tutor groups typically have 10 students, meaning our tutors really get to know and support you.



6. Dedicated Sixth Form Centre

With excellent facilities for both working and socialising, the Wortley Centre is a fantastic space for our Sixth Form students to bridge the gap between school and university life. With a resource centre, café, study spaces and break out rooms, the Wortley Centre offers the perfect space for students to thrive.



7. Specialist careers support

In a purpose-built and inspiring Careers and Higher Education Centre, our dedicated and specialised careers team will guide you to achieve your career goals. In the last four years we have placed 337 at university with 144 at Russell Group universities and 106 at UK Top 20 universities.

"Pupils gain their preferred choice of higher education place, including highly competitive courses in medicine and engineering." ISI Inspection Report March 2025



8. Co-curricular opportunities to broaden your horizons

From the Duke of Edinburgh's Award, Combined Cadet Force and Community Service to a wealth of choice in Sport, Drama, Art and Music, plus the Oxbridge programme and debating skills - there are so many opportunities to discover your passions outside the classroom and broaden your horizons.



9. Leadership opportunities for growth

Our students gain lots of practical experience through mentoring opportunities, service and prefect responsibilities, that help to grow the confidence and leadership skills that help you to stand out from the crowd.



10. A vibrant, welcoming and energising community

Our Sixth Form students belonging to a special and vibrant community where every member is supported and encouraged to achieve their personal best, develop their full potential, and start on a pathway to the future they want.



The Wortley Sixth Form Centre

Sixth Form students are welcomed into the modern Wortley Centre. It is designed to be both collaborative and flexible, reflecting the way students study today. The Centre is a place for learning and recreation, where you can be independent and benefit from your own space, whilst still being a part of the whole school community.

Modelled on university facilities, the refurbished building fulfils all your needs in a contemporary setting. Fully equipped classrooms, separate study spaces and a resource area, providing an optimum Sixth Form learning environment. In between lessons and study time, you will be able to socialise with friends in a variety of spaces and enjoy a selection of food and drinks in the Ivy Café.

Within the Wortley Centre, Sixth Formers have access to:



Computer suite



Meeting rooms



Common room



Ivy Café



Dedicated lockers



Changing room space





Beyond the Classroom

Academic Co-Curricular

Academic co-curricular activities promote the higher-level thinking and problem-solving abilities required to succeed at the most competitive universities. You might join Medsoc, Economics Club, Psychology Society or the Senior Politics Club. You might take part in Model United Nations General Assembly (MUNGA), or a subject-based masterclass run through our links with local universities. These activities enable students with high academic ambitions to work towards their goals with specialist support and guidance.

Extended Project Qualification (EPQ)

The EPQ is a stand-alone qualification equivalent to an AS qualification. EPQ is offered as an option with the intention of strengthening the programme of study by developing a wider range of skills, through allowing students to explore a topic beyond their syllabus which they are passionate about.

Life Skills and PSHE

Led by our experienced Tutor team and external specialists this programme of learning helps to further prepare our students for the challenges of life beyond Trent. Constantly evolving to meet the demands of the world today, some elements of this programme include classes on:

- RSE for Sixth Form
- Managing workload
- Goal setting
- Stress management and wellbeing
- The Law and me
- Professional communication skills and conventions
- Budget planning and management
- Understanding money matters and finance
- Project You: Interview skills, CV writing, Me in a Minute
- Domestic skills: cooking and laundry

Duke of Edinburgh's Award (DofE)

Through the DofE programme you will have fun, improve self-esteem and build confidence. You can gain essential skills and attributes for work and life such as resilience, problem-solving, team-working, communication and drive, enhancing your university and job applications.

Service Activities

In Year 12 you are required to commit to a service activity, in order to give something back to the school or local community.

Examples of the options available are:

- Combined Cadet Force (CCF)
- Environmental Team
- AgeUK Careline
- Sports Coaching
- Community Cooking

Positions of Responsibility

The development of leadership experience and management skills is a crucial aspect of the Sixth Form. There are over 75 positions of responsibility and leadership that you can, and should, apply for. There are currently 58 different prefect roles, as well as opportunities to lead in the CCF, Boarding Houses, sports teams, debating, charity fundraising, and more.

Sport

We believe that a healthy, successful lifestyle is one that embraces regular exercise. You will have two Games sessions per week. Many students are involved in sports activities and our programme is extensive, covering all levels from elite performers to enthusiasts and beginners. Opportunities include:

- Rugby
- Netball
- Hockey
- Cricket
- Tennis
- Adventure Sports
- Athletics
- Football
- Swimming
- Golf
- Yoga
- Gym

Music

The variety of music at Trent College means there is something for everyone, whether you perform at national standard or simply enjoy taking part. Highlights include year groups concerts, rock gigs, Summer Soiree, Winter Wonderland and a concert at Nottingham's Albert Hall. There are also Chapel services to sing in, music competitions, and regular drivetime and lunchtime concerts for solo and chamber performances. Opportunities include:

- Symphony Orchestra
- Jazz Band
- Brass Ensembles
- Music Technology
- Wind Bands
- Percussion Ensembles
- Trent Baroque
- String Quartets
- Woodwind Ensembles

Drama

Being involved in Drama provides students with experiences that develop not only theatre skills but also essential life skills. Productions range in scale and style, and offer the chance to work with professional theatre practitioners, to enhance performance skills, learn stage and costume design, stage management and how to become fully competent theatre technicians. From students who want to join in for fun, to aspiring actors, we cater for all students' needs.



The Benefits of Boarding

Boarding in the Sixth Form is very popular with approximately 30% of our students choosing this option. You can board full time, weekly or on a more flexible basis. Students choose to board for a number of reasons, including access to supervised study sessions and to make use of academic resources and support.

Our Boarding programme has an option to suit every family. Boarding is not just for families who live far from school, over 80% of our Flexi & Weekly boarders live within a 45-minute drive time.



5 Benefits of Boarding

Gain independence and a wider world perspective

The life skills you learn through Boarding with like-minded peers from across the UK and the wider world will help you go further in education and beyond.

Full, flexi and weekly Boarding balance school life with family time

Weekly Boarders stay at Trent College on school days and go home at weekends, flexi boarders stay at school 2 or 3 nights per week.

Access to extra support & set homework time

Allocated time for prep ensures our Boarders get homework in on time. A number of subject teachers are on hand to provide extra support.

Plenty of time to relax & socialise

With travelling time saved, Boarders have more opportunity to unwind in the evenings. Exciting weekend activities provide fun on and off campus.

Make friendships that last a lifetime

When you join the Trent College Boarding community, you become part of our Boarding family, and share experiences and memories to cherish.

“Joining Trent College is a decision I’ve always been proud of, especially being a Boarder. It is such a friendly and supportive environment”





Specialist Careers Support Throughout Your Sixth Form Journey

Our academic curriculum is supported by an inspiring careers programme, based in our purpose built Careers & Higher Education Centre that is registered and accredited by the Careers Development Institute.

Through group sessions and numerous one-to-one meetings, our role is to help you decide what route will suit you best, and ensure you are fully prepared and in the best place to achieve your goals. We provide:

Tailored Guidance

Access to dedicated Careers staff is a key element of our careers provision. Accredited and qualified staff ensure students can receive the careers guidance they require throughout the Sixth Form.

University Support

The majority of Trent College students apply to university, so preparation for transition to Higher Education is included in our wide-ranging PSHE programme. This includes the UCAS application process, interview skills, CV preparation and current recruitment techniques.

Careful research is important when deciding what steps to take. You are encouraged to visit universities in Year 12 and will have access to the extensive Unifrog careers software. We have close relationships with national and international universities who offer guidance on courses, university life and the application process. For those students wishing to apply to a university abroad, we have a dedicated member of staff, and a student group, to support and guide on this often complex process. We have a strong track record with student success in sports scholarships to the USA and can also offer guidance on agents.

Academic Forum Group

Students who are ambitious to attend the most selective universities and courses are encouraged to take part in our Academic Forum Group. Applicants meet weekly and are mentored. The Academic Forum includes debating, interview practice, specialist academic support and networking with alumni. Additionally, the Veterinary Society and Medical Society meet weekly, offering specific support for these highly competitive courses.

Degree Apprenticeships and Other Pathways

For students wishing to follow a non-university path, the Careers department runs groups, societies and lectures supporting Degree Level Apprenticeships, gap years and Foundation Diplomas. Apprenticeships use very varied application and recruitment techniques and our dedicated Apprenticeship Group enables students to research these in depth whilst receiving support in completing your applications.

Careers Events and Networking

The Careers department arranges a series of events to inspire and motivate you. These include guest speakers with a wide range of often amazing experiences, a Careers Fair where you can meet employers, institutions and service providers, and mentoring by members of our Old Trident alumni community who are enormously supportive of our existing students.



How Do I Decide Which A Levels or BTEC Courses to Take?

Sixth Form is the most exciting stage of your school career. For the first time, you have almost total control over which subjects to study and success in these subjects will determine the next stage of your education or career.

At Trent College, we have over 20 A Level subjects to choose from, alongside two well established BTEC pathways, that together should allow you to select an academic curriculum that inspires you and meets your aims and ambitions.

When choosing your A Level/BTEC courses, focus on which subjects you enjoy most and that have brought you the most success. You will be studying each course for an allocated thirteen 60-minute periods each fortnight. In addition, you will receive up to five hours of independent learning tasks per subject, each week. The content will get tough,

so it really helps with your motivation that you enjoy what you are learning and you know you can achieve highly in these subjects.

In the Sixth Form you are able to shape your academic curriculum to take on the subjects that you prefer and have performed well in. Keep in mind that GCSE grades are also important in university applications and as such, it is important to do the best you can in all your subjects.

If there is a subject that we don't currently offer that you would like to study, please let us know so that we can consider adding it to our offerings.

So much choice can make it difficult to decide which path to follow. This guide addresses the frequently asked questions posed by students when making these choices.





FAQs

Q. Which subjects should I choose?

Being positive underpins all we do in the Sixth Form. The choices you make should be based on your goals, your preferences and your achievements at GCSE. Remember that alongside these choices we expect students to select from a further range of options that may include the Extended Project Qualification (EPQ). International students may also be required to study for an IELTS exam.

Q. How many A Level/BTEC subjects should I take?

Most students will take three A Levels. Applications to the most competitive universities and courses expect three A Levels, alongside evidence of a range of other enrichment experiences that together demonstrate your interests and abilities in relevant areas of the curriculum.

BTEC courses in Sport and Business Studies carry the same UCAS points as A Levels and are well established pathways towards relevant university and apprenticeship courses. They offer a genuine alternate learning experience for those students who prefer an assessment based primarily on coursework and less on end of course examinations. Students can combine A Levels and BTEC courses.

Q. Can I take four A Levels?

Students may, if carefully considered, choose a fourth A Level and this will be discussed when you submit your options. Please remember that alongside your A Level/BTEC choices you are expected to take on elements from the broader academic curriculum such as the EPQ, essay competitions and design competition.

Q. What is the broader academic curriculum?

Beyond your chosen subjects, the broader academic curriculum is designed to develop and evidence your passions outside the classroom. You can use this programme to supplement

your subject choices. The Extended Project Qualification, for example, is an original piece of work where all ideas – and a wide variety of outcomes – are possible. It develops your skills and leads to a qualification which is recognised and highly valued by universities, as well as being fantastic subject matter for your personal statement, CV and university or job interview. In Sixth Form you will also have access to the Sixth Form Programme, a diary of events which includes visits from speakers, politicians, leading figures, Old Tridents, careers advisors and business professionals. Students can further broaden their experiences through a range of activities such as the Arkwright Scholarship Design competition, essay competitions, CREST awards and the science and maths Olympiads.

Q. Can I still receive Learning Support in the Sixth Form?

The Learning Support Department offers support to Sixth Form students who require advice for areas of difficulty or who have SEND. Students may refer themselves, or referrals may be made by staff or parents. New students with previous assessment results should send this information to the Learning Support department. The Head of Learning Support will liaise with parents, teachers, professional advisers and the student themselves to create an effective support plan for learning difficulties.

Q. I did well in my GCSEs. How do I qualify for an Academic Scholarship?

The purpose of awarding a Trent College Scholarship is to recognise excellence and identify an example for others of the heights to which they can aspire. Students already at Trent do not need to apply for the Scholarship, all students will be automatically considered on the basis of GCSE results. The expectation is that recipients will have gained a minimum of eight 7 to 9 grades at GCSE, with at least four being 8 to 9 grades.

Q. Do I have to have studied this course at GCSE to take it for A Level/BTEC?

There are a number of courses available in the Sixth Form which you may embark on without having studied the equivalent GCSE. These are: Business Studies, BTEC Business, BTEC Sport, Computer Science, Economics, History, Photography, PE, Politics, Psychology, RS: Philosophy and Ethics. However, please look carefully at the subject guidance on page 20 as many subjects do require at least a grade 6 in a GCSE subject that reflects the required skill set e.g. literacy and numeracy skills.

Q. I have a career in mind. Which subjects best support this career?

You need to do some research. The Careers department and search facilities in the Unifrog software will help you understand the many well-trodden paths taken towards successful careers. The table below offers some general guidance.

Career	Lead Subjects	Supporting Subjects
Architecture	Art/Design & Technology	Art, Maths , Design & Technology and Physics
Chemical Engineer	Chemistry/Maths	Further Maths
Dentist	Biology/Chemistry	English, A Modern Language, Maths, History, Physics, Politics, Psychology, and RS: Philosophy and Ethics
Doctor	Biology/Chemistry	English, A Modern Language, Maths, History, Physics, Politics, Psychology, and RS: Philosophy and Ethics
Engineer	Maths/Physics	Further Maths
Law	History/RS: Philosophy and Ethics/Politics	Economics and English
Physiotherapy	Biology/Physical Education	Chemistry, Maths and Psychology
Sports Science	Biology and/Physical Education A Level	High tariff university courses need a traditional science alongside PE – normally Biology. Lower tariff courses may accept PE A Level alongside Geography or Psychology as the science.
Veterinary Surgeon	Biology/Chemistry	English, A Modern Language, Maths, History, Physics, Politics, Psychology and RS: Philosophy and Ethics

Q. I have a specific university course/ apprenticeship in mind. Which subjects should I choose?

Again, you need to do some research. The Careers department will help you identify the range of courses that different universities will accept. Required courses do differ between universities so you must not make assumptions – do your research! The Unifrog software used by Careers alongside the UCAS website will provide all the information you need about entry requirements for different courses and different universities. Be aware that some high tariff university courses expect more traditional subjects to be taken at A Level. If in doubt then confirm your choices with the Careers department or on the UCAS website. Keep in mind that GCSE grades are also important in university applications.

Q. I have a university course/apprenticeship in mind but I know I will struggle with the required A Level courses. What options do I have?

University courses can differ significantly in course content and can therefore differ in their A Level/ BTEC entry requirements. You need to do your research. Courses with similar names may require markedly different levels of numeracy, literacy or knowledge of science. For example there are 350 different careers in the NHS and around 1,600 undergraduate degree courses in Business. However, remember that if you are likely to struggle with the required A Level/BTEC courses then you are likely to struggle with the degree course. The Careers department will help you.

Q. What is a ‘Higher Tariff’ university course?

The higher tariff group includes Oxford and Cambridge and the Russell Group of research-intensive universities. The phrase is used to indicate that entry to these universities and courses will typically be more competitive and will therefore require students to achieve higher grades at A Level in order to gain a place.

Q. After Sixth Form I am not sure about what I want to do. How does this impact on my choices?

Ultimately the Sixth Form is your opportunity to study the subjects that inspire you the most, which you enjoy most and that will bring you the most success. So choose what you are best at. At the same time, you should make sure to avoid choices that are too narrow. It is important to further develop a range of your skills. Please note that choosing subjects that complement and support one another is also an important ingredient to success and this is more important for some subject choices than for others. The table on page 17 offers you some further summary guidance. There is more detail in the later pages of this guide.





Entry Requirements

In order to be successful in our post-16 courses, there is a general requirement for a minimum grade 4 pass in English and Maths, plus the specific requirements outlined for each subject.

A Level /BTEC Course	Minimum grade requirements
Art	Grade 6 in GCSE Art is a minimum entry requirement for A Level. Many students wishing to pursue a creative or decorative arts course at university take on a Level 3 Art Foundation course for one year before going to university.
Biology	Grade 6 in GCSE Biology (or 6-6 in GCSE Double Award Science) and grade 6 in Maths is a minimum entry requirement for A Level. Pupils with a grade 7+ are much more likely to be successful.
Business A Level	GCSE in Business is not required, but a grade 6 at GCSE in English and Maths is required.
Business BTEC (Extended Certificate or Diploma)	GCSE in Business is not required, but a grade 4 at GCSE in English, Maths and another essay-based subject is required. Students should be interested in business and have strong communication skills.
Chemistry	Grade 6 in GCSE Chemistry (or 6-6 in GCSE Double Award Science) and grade 6 in Maths is a minimum entry requirement for A Level. (grade 7 preferred)
Computer Science	GCSE in Computer Science is not required, but a grade 6 at GCSE in Maths is recommended.
Design & Technology	Grade 6 in GCSE Design & Technology is a minimum entry requirement for A Level. Good maths, science and artistic skills are also advised.
Drama & Theatre Studies	Students should have a love of and flair for Drama and the Expressive Arts. A grade 6 in Drama GCSE is a minimum entry requirement for A Level.
Economics	GCSE in Economics is not required, but a grade 6 at GCSE in English Literature or English Language and Mathematics is recommended.
English Language & Literature	Grade 6 in GCSE English Language and English Literature is a minimum entry requirement for A Level.
English Literature	Grade 6 in GCSE English Language and English Literature is a minimum entry requirement for A Level.
Geography	Grade 6 in GCSE Geography is a minimum entry requirement for A Level.

A Level /BTEC Course	Minimum grade requirements
History	Grade 6 in GCSE in History is a minimum entry requirement for A Level.
Mathematics & Further Mathematics	Grade 6 in GCSE Maths is a minimum entry requirement for Maths A Level. Grade 8 or 9 in GCSE Maths is highly desirable for Further Maths A Level. Students may take Further Maths as a fourth A Level following advice from the Maths department. Pupils with a grade 7+ are much more likely to be successful.
Modern Languages	Grade 6 in the relevant language at GCSE is a minimum requirement for A Level.
Music	GCSE in Music is not required, although a qualification the equivalent of Grade 5 Theory would be expected as a substitute. Grade 7 practical ability (or equivalent) is recommended or grade 6 in Music GCSE.
Photography	GCSE in Photography is not required. No previous technical skills in Photography are required but students need good literacy skills and an appreciation of the visual world.
Physical Education	GCSE in PE is not required. With some challenging science modules, students are expected to have achieved success at GCSE in the Sciences. They should also offer a high level of performance in a sport.
Physics	Grade 6 in GCSE Physics (or 6-6 in GCSE Double Award Science) with a grade 6 in GCSE Maths. (grade 7 preferred).
Politics	Grade 6 at GCSE in English and/or History is required.
Psychology	GCSE in Psychology is not required, but a grade 6 at GCSE in English and a Science subject is required. Good literacy skills are also recommended.
RS: Philosophy and Ethics	GCSE in RS is not required, but a grade 6 at GCSE in an essay-based subject is required.
Sport BTEC (Extended Certificate or Diploma)	GCSE in PE is not required, but a grade 4 at GCSE in English, Maths and Science is required. Students should have a strong interest in sport.

ART (Fine Art) A Level

A Level Exam Board: AQA

Contact: Mrs Kate O'Hare

Students considering Art A Level are encouraged to develop a curiosity about the visual world; to explore a wide range of artists, designers, media and techniques, including photographic darkroom techniques and to become independent, creative learners. Personality and individuality are highly valued and students and staff work closely together to create challenging, exciting and thought-provoking work. Sixth Form Art students are based in the Sprakes' Studio - a self-contained studio space exclusively for our A Level students. Our courses are commended by AQA for being highly structured, yet allowing for individual creative development and personal expression. Yearly practical workshops with artists are part of the course and we have had recognised artists such as Ian Murphy, Michael Brennand-Wood, Joel Penkman and Jeanette Barnes working with our students.

Entry requirements

Students are expected to achieve a Grade 6 or more in GCSE Art.

Where can Art take me?

Many of our students have used the high grade which they achieved to go on to study a wide range of different courses including Maths, History and Sciences at top universities. It is also a vital course for those students specifically aiming for a career in Art or Design or a further education Foundation Art and Design course or degree courses such as BA degrees in Art and Design, Architecture, Engineering, Fashion, Graphic Design, Interior Design, 3D Design, Multi-Media Courses (for example Film and Television Studies).

Assessment

In Year 12 you will undertake a 6 week, workshop-based induction phase, exploring a wide range of new and experimental techniques. You will then start a personal project which follows the structure of the assessment objectives at A Level. You will develop practical techniques and written responses, working with increasing independence and making creative, personal responses to your chosen theme.

From Easter of Year 12, students will start their coursework project 'Component 1: Personal Investigation' worth 60% of your overall mark and which involves a 3,000 word essay. This is followed by 'Component 2: Exam Unit' which involves a 15 hour exam but which is marked as a whole project, not just the exam piece. This is worth 40% of the total mark.





BIOLOGY A Level

A Level Exam Board: AQA
Contact: Mrs Caroline Forster

1st year of study in Year 12

Two specialist biologists teach four units: 1. Biological molecules; 2. Cells; 3. Exchange with the Environment; 4. Genetic information, variation and relationships between organisms.

2nd year of study in Year 13

Two specialist biologists teach four units: 5. Energy transfers in and between organisms; 6. Responses made to changes in internal and external environments; 7. Genetics, populations, evolution and ecosystems; 8. Control of gene expression.

Students usually participate in a short residential field course held at the FSC centre in Snowdonia at the start of the Michaelmas Term in Year 13. There is no additional charge for this trip.

A strong liking for Biology, a willingness to work hard and take interest in current biological sciences and the application of knowledge to unfamiliar concepts are expected.

Entry requirements

A grade 6 in GCSE Biology (or a grade 6-6 in GCSE Double Award Science) is a minimum entry requirement for A Level, however a grade 7 at GCSE is recommended should you wish to take this subject without one of these supporting Science/Maths subjects. A grade 6 at GCSE in Chemistry and Maths is also highly desirable. Pupils with a grade 7+ are much more likely to be successful.

Possible subject combinations

Biology with Chemistry, Physics, Mathematics, Geography, Psychology and PE make good combinations. Biology can also be a popular subject to combine with English, History and Modern Languages because it develops critical thinking and analysis skills.

Where can Biology take me?

An A Level qualification in Biology is useful for many courses in Higher Education due to the analytical skills developed during the course. It also heightens awareness of biological advances and ecological issues. For certain vocational courses, a good pass in A Level Biology is a standard requirement; these include medicine, veterinary science, dentistry, physiotherapy and nursing.

Investigative and practical skills

You will carry out a wide range of practical investigations and required practical assessments (CPAC) throughout the course. The investigative work enables you to develop practical skills, knowledge and application of the concepts being studied. The residential field course covers a range of ecological field techniques, consolidates other practical skills, and also forms part of the CPAC assessment.

Examinations and Assessment

Practical work is assessed throughout the course and in the written exams at the end of the two year course. A pass or fail is recorded.

Written work is assessed at the end of the course in three papers, each of 2 hours duration.

Paper 1: examines material covered in Units 1 to 4, including relevant practical skills.

Paper 2: material covered in Units 5 to 8 is examined, including relevant practical skills and links to earlier units.

Paper 3: examines material from all units and focuses on the ability to critically analyse data. You will also be required to write one synoptic essay from a choice of two titles.





BUSINESS STUDIES A LEVEL

A Level Exam Board: Edexcel

Contact: Ms Anna Waite

Business is a very popular and successful subject at Trent College. It is extremely useful, even if it will not automatically lead to massive pay cheques or one's own business empire!

Business is based on the role of organisations in society. The course aims to enable you to examine critically the aims, objectives and strategies of business organisations. Topics are studied in the context of decision-making and problem-solving; students are expected to find their own solutions and support them with well-reasoned arguments.

Entry requirements

Students opting for this subject should feel confident in the use of figures, and must be able to produce pieces of extended writing. It is required that you should have achieved at least grade 6 in Maths and English. You do not need to have studied Business at GCSE.

Possible subject combinations

Business combines well with all other A Level subjects, in particular Politics, Geography, Sport BTEC and Economics.

Where can Business take me?

Combining aspects of the four main functional areas of business – marketing, finance, HR and operations – there is a good case to be made for this being a vital subject for any student to study. In the past, students have gone on to secure higher level apprenticeships in business related subjects or gone to university to read courses such as Management, International Business, Marketing and Human Resources Management.

Business also offers a range of opportunities including a profession qualification from LiBF, Student Investor and other national competitions.

We run an Enterprise Society called Trent Traders to encourage a greater understanding of the subject.

Assessment

Paper 1: Marketing, people and global businesses (2 hour examination, 100 marks).

This unit examines issues such as how businesses meet customer needs, managing people and the role of entrepreneurs and leaders. It also considers globalisation, global markets, and companies.

35% weighting of final qualification.

Paper 2: Business activities, decisions and strategy (2 hour examination, 100 marks)

This unit examines topics such as managing finance, objectives and strategy and managing change.

35% weighting of final qualification.

Paper 3: Investigating business in a competitive environment (2 hour examination, 100 marks)

This is a synoptic paper that covers all themes introduced in the previous two units. There is a pre-release industry sector to study and students then respond to unseen stimulus material in the examination.

30% weighting of final qualification.

BUSINESS BTEC

BTEC National Diploma Exam Board: Edexcel

Contact: Ms Anna Waite

Units of Study

Mandatory:

- Exploring Business
- Developing a Marketing Campaign (assessed externally)
- Personal and Business Finance (examination)
- Managing an Event*
- International Business*
- Principles of Management* (assessed externally)
- Optional units may include modules such as:
- Recruitment & Selection Process
- Market Research*

* means these additional units are required for the BTEC National Diploma Award (equivalent to two A Levels).

The academic content studied is very similar to that of the A Level. The main difference is the way the BTEC is assessed.

Entry requirements

GCSEs at grade 4 and above, in English, Maths and another essay-based subject. Students should have strong communication skills and a genuine interest in business. High quality organisation and resilient research skills are vital due to the coursework nature of assessment. You do not need a GCSE in Business, but it may be an advantage.

Where can the BTEC National in Business take me?

The Diploma is ideal for students who apply for a business related undergraduate degree or a business related Higher Apprenticeship. The Extended Certificate will provide a strong complementary qualification for other career paths such as Social Sciences. Either award will be a beneficial qualification to enter the world of employment.

Possible subject combinations

- PE
- Psychology
- Geography

Assessment

This qualification will be available as an Extended Certificate (equal to one A Level) or as a Diploma (equal to two A Levels), depending on the number of units taken.

For the Extended Certificate, there are two external examinations early in the course, with the possibility of retakes. The remaining 42% of the qualification is assessed by internal assignments.

For the Diploma, there are three external examinations early in the course, with the possibility of retakes. The majority (55%) of the qualification is assessed by internal assignments.



CHEMISTRY A LEVEL

A level Exam Board: AQA
Contact: Dr Carrie-Ann Wakerley

A Level (7405): Atomic Structure, Calculations, Bonding, Periodicity, Crude Oil and Alkanes, Energetics, Kinetics, Equilibria, Redox Reactions, The Halogens, Alkenes, Haloalkanes and Alcohols, Organic Analysis.

Kinetics, Equilibria, Acids and Bases, Advanced Organic Chemistry, Thermodynamics, Periodicity, Redox and Electrochemical Cells, Equilibria, Transition Metals, Reactions of Inorganic Compounds, Analysis.

Students can also take part in various extracurricular activities including spectroscopy workshops, molecules research, presentations, and lab coat dyeing.

Entry requirements

A grade 6 in GCSE Chemistry (or 6-6 in GCSE Double Award Science) is a minimum requirement..

A good ability with GCSE Mathematics (Grade 6 minimum, grade 7 preferred) is essential as a large proportion of the questions at A Level involve calculations. A Level Mathematics is not essential but would help give pupils extra confidence in dealing with these concepts.

Possible subject combinations

Chemistry, Physics, Biology, Mathematics, Design & Technology, Geography.

Where can Chemistry take me?

A qualification in Chemistry is useful for most courses in Higher Education as it demonstrates an ability to use data, analyse problems logically, and handle chemicals and apparatus safely. It also gives an awareness of the massive role that Chemistry plays in everyday issues such as the environment and industry.

For certain vocations or courses, Chemistry at A Level standard is a requirement. These include medicine, veterinary science, pharmacy, chemical engineering and most biological subjects.

Assessment

Practical work forms part of the course. It is assessed during the written exams at the end of the course and practical skills are assessed continually throughout the two years. A pass or fail is recorded.

Paper 1: Physical and Inorganic Chemistry and practical skills (120 minutes). 35% weighting of the final qualification

Paper 2: Organic Chemistry and practical skills (120 minutes). 35% weighting of final qualification

Paper 3: Covers any content and practical skills (120 minutes). 30% weighting of final qualification



COMPUTER SCIENCE A LEVEL

A level Exam Board: AQA
Contact: Mr Shaun Reynolds

Computing is really just problem-solving and it pre-dates the computer by at least 2,000 years. It is about so much more than using Microsoft Office products.

In the modern world, whether in industry, research or even in everyday life, an understanding of computers, the internet and programming is vital. All scientists, mathematicians and engineers will at some point have to produce a program as part of their studies, and the ability to theoretically model situations will open up career pathways that are otherwise closed.

Also, the software design industry is booming. The gaming industry alone is now bigger than Hollywood and, with the rise of mobile technology, the software industry will only increase in size. Programmers are highly sought after for the unique mix of logical reasoning, creativity and (above all) problem-solving skills that they possess.

The Government has recently stated that the country must produce more programmers as there simply aren't enough for the jobs that are available. As such, computer scientists are in high demand. The Computer Science A Level caters for those students with a more scientific/mathematical interest in computing and those who may see themselves in a technical profession in the future. The self-selected project gives you a chance to do something truly unique to set yourself apart from the crowd at university interviews.

Entry requirements

A Grade 6 in Mathematics at GCSE is recommended. The more Mathematics students have studied, the quicker they will pick up programming concepts. Many of our Computer Science students have already completed GCSE Further Mathematics before joining the course.

Possible subject combinations

Computer Science is mathematical in nature and would work particularly well with students who are also taking Mathematics and/or Physics or Chemistry.

Where can Computer Science take me?

Computing forms a crucial component of the following industries:

- Engineering
- Technology & Communications
- Mathematics
- Physics
- Chemistry
- Economic Forecasting
- Software Design
- Biomedical Science
- Meteorology

Assessment

There are two final exams at the end of Year 13. One re-examines the first year content (40% weighting of final qualification), the other is a Year 13 theory exam (40% weighting of final qualification). There is also an assessed coursework project in which students write a program based on a subject of personal interest (20% weighting of final qualification).

DESIGN AND TECHNOLOGY A LEVEL

(Product Design)

A Level Exam Board: AQA
Contact: Mr James Prince

Design and Technology (D&T) helps to equip students with the essential skills required to participate effectively in the highly technological world in which we live today. An important feature of D&T is that it makes immediate and practical use of knowledge and skills from other subjects. The core skills of innovation, creative problem-solving, a thorough understanding of aesthetics, social and environmental issues, industrial practices and the effective use of ICT make D&T students a highly attractive proposition for employers and universities alike.

Entry requirements

This course is open to all students who have gained a 6 or above at GCSE in Design and Technology.

Students who have studied other Design and Technology disciplines may be considered for this course but consultation with the Head of Department is advised to determine suitability.

Possible subject combinations

A Level Design and Technology would provide a complementary subject for students studying Art, Mathematics or Science-based subjects at A Level and offers a contrasting subject with the Arts, Modern Languages and Social Sciences.

Where can Design and Technology take me?

In recent years, Trent College D&T students have gained positions at prestigious companies such as Dyson, Hozelock and BAE systems, as a result of their A Level studies. Trent College D&T students have received top awards for their A Level work in national competitions including the Young Engineer for Britain, Young Electronic Designer, Crest Award and the Engineering Education Scheme.

Students who are considering a career in any design related area, from Architecture and Engineering to Product and Environmental Design, should view Design and Technology as a desirable A Level.

Assessment

Paper 1: Written paper; Core technical principles and core designing and making principles (2 hours 30 minutes, 100 marks).

A mixture of short answer, multiple choice and extended response questions.

25% weighting of final qualification.

Paper 2: Written paper; A mixture of short answer, multiple choice and extended response questions (1 hour 30 minutes, 100 marks). 25% weighting of final qualification.

Section A – Product analysis, and six short answer questions based on pictures of products.

Section B – Commercial manufacture – Short and extended response questions.

Non-Exam Assessment: Design and Making Practice

(45 hours, 100 marks).

Practical application of technical principles and specialist knowledge through a design and make project.

A digital design portfolio and final product prototype.

50% weighting of final qualification



DRAMA & THEATRE STUDIES A LEVEL

A Level Exam Board: Edexcel
Contact: Mrs Donnaleigh Ward

Component 1: Devising Coursework 40% of the qualification

In this component you will develop your creative and exploratory skills to devise an original performance. The starting point for this devising process will be an extract from a performance text and an influential theatre practitioner.

In your creative explorations, you will learn how text can be manipulated to communicate meaning to audiences and you will begin the process of interpretation. You will gain an understanding of how a new performance could be developed through the practical exploration of the theatrical style and use of conventions of the chosen practitioner.

There are three main areas of focus:

Interpreting, creating and developing a devised piece from one key extract from a performance text and applying the methods of one practitioner.

A group performance/design realisation of the devised piece.

Analysing and evaluating the creative process and devised performance. Students may complete this component either as a performer or as a designer.

Component 2: Text in Performance Coursework 20% of the qualification

You will develop and demonstrate theatre-making skills, appropriate to your role as a performer or designer. You will explore how to realise artistic intentions in performance.

The knowledge and understanding acquired though the study of one key extract from a performance text in Component 1 can be applied to assist in the interpretation, development and realisation of key extracts from performance texts.

There are two areas of focus:

A monologue or a duologue performance/design realisation from one key extract from one performance text.

A group performance/design realisation of one key extract from a different performance text.

Students may complete this component either as a performer or as a designer or combine these roles.

Component 3: Theatre Makers in Practice Written examination: 2 hours 30 minutes 40% of the qualification

This component requires you to consider, analyse and evaluate how different theatre makers create impact.

Throughout this component, you will consider how production ideas and dramatic elements are communicated to an audience from the perspective of a director, a performer and a designer.

You will critically analyse and evaluate their experience of live performance. As an informed member of the audience they will deconstruct theatrical elements which will help inform their own production choices and develop their own ideas as potential theatre makers.

You will practically explore texts in order to demonstrate how ideas for performance and production might be realised from page to stage.

They will also consider the methodologies of practitioners and interpret texts in order to justify your own ideas for a production concept. You will research the original performance conditions and gain an understanding of how social, historical and cultural contexts have informed your decisions as theatre makers.

There are three areas to be covered:

A live theatre evaluation.

Page to stage: realisation of a complete performance text.

Interpreting one complete performance text, in light of one practitioner for a contemporary audience.



ECONOMICS A LEVEL

A Level Exam Board: Edexcel

Contact: Mrs Sharon Prosser

Economics at Trent College reflects the real world, relating current affairs to clearly explained economic theory. The course aims to provide a critical understanding of the economic choices faced by consumers, business and government and helps you to explore the topics which dominate the news and shape the world we live in, enabling you to discuss these issues in an objective, informed manner.

Theme 1. Markets and Market Failure: This theme provides you with an understanding of how markets allocate resources through the forces of demand and supply, analysing markets such as housing and healthcare. The theme then explores factors which cause markets to fail and operate inefficiently such as information failure and the actions government can take to correct the market outcome. Finally, the theme looks at how government intervention can lead to a worse outcome, such as when there are unintended consequences.

Theme 2. The UK Economy – performance & policies: This theme focuses on the national economy, how this works and how performance can be measured, before focusing on the objectives of the UK government and the policies it has available. You will investigate how the UK economy has changed in the last 10 years, as well as comparing the Great Depression and the 2008 Financial Crisis.

Theme 3. Business behaviour & labour market: This theme develops Theme 1 and introduces you to more realistic models of markets, such as Oligopoly and how the level of competition effects consumers and efficiency. You will investigate the labour market and actions government can take to promote competition.

Theme 4. A global perspective: This theme develops Theme 2 but focuses on international economics. You will study the importance of international trade and competitiveness, as well as looking at countries at different stages of development, to consider the strategies that can be used to promote growth.

Entry requirements

Grade 6 at GCSE in English Literature or English Language and Mathematics is recommended. An interest in current affairs is essential and you are encouraged to read extensively from journals, newspapers and non-fiction books, as well as other forms of media such as podcasts and documentaries.

Possible subject combinations

Economics combines well with all other A Level subjects including Business, History, Mathematics, Politics, Geography and Languages.

Where can Economics take me?

Economics is a highly respected A Level subject. To study it further at university may require Maths A Level, so it is worth doing research before making choices. Students studying Economics move on to careers in Banking and Finance, Consultancy, the Civil Service and Journalism.

There is an Economics Society run by Sixth Form economists where students discuss a wide range of topics, as well as the opportunity for live-streamed lectures from institutions such as the London School of Economics (LSE) and Deloitte. You will also have the opportunity to participate in competitions including the RES Young Economist competition and the IEA Budget Challenge.

Assessment

This course is assessed 100% by examination.

Paper 1: Markets and Business Behaviour: assesses the microeconomics based on themes 1 and 3. A two hour examination, 100 marks, 35% weighting of final qualification.

Paper 2: The National and Global Economy: assesses the macroeconomics based on themes 2 and 4. A two hour examination, 100 marks, 35% weighting of final qualification.

Paper 3: Microeconomics and Macroeconomics: synoptic assessing all themes. A two hour examination, 100 marks, 30% of final qualification.





ENGLISH LANGUAGE AND LITERATURE A LEVEL

A Level Exam Board: AQA
Contact: Mr Josh Beal

The English Language and Literature course combines study of two disciplines through a method called stylistics. You will explore texts such as: 'The Handmaid's Tale', 'A Streetcar Named Desire', 'The Great Gatsby' and Carol Ann Duffy's poetry. You will also explore a range of non-fiction texts in the Paris Anthology.

In this course, you are examined on the traditional skills of analysis but also have the opportunity to write creatively based on a text you have studied. Thus, this course allows students a broad view of English, enabling them to explore both literary and linguistic analysis of how we use language in fiction and in daily life and speech.

Where can English Language and Literature take me?

The study of English can give you a deep insight into why writers write and how they achieve their effects upon the reader. This may lead you into a lifelong love of the written word and you may wish to study English Literature at a higher level.

English Language and Literature is widely regarded by top universities as a very good qualification to show depth of knowledge and excellent application to learning. It also allows you to access careers in Journalism, Media, Drama, Publishing, Editing, Law, History, Television and Teaching; the field really is wide open when you have a qualification in English Language and Literature.

Entry requirements

Grade 6 or above at GCSE in English Language and Literature is required. An enjoyment of reading, an understanding of analysis, and a desire to make sense of abstract concepts are all useful.

Possible subject combinations

The writing skills developed in English Language and Literature work well alongside other subjects that require similar writing skills such as History, Politics and Psychology.

Assessment

Paper 1: Paris Anthology (closed book) The Handmaid's Tale (open book) Poetry- Duffy (open book) 40%/3hrs

Paper 2: The Great Gatsby Recast and Commentary, Streetcar Named Desire (open book) 40%/2hr30

Non-Exam Assessment

3000 word independent investigation on linguistic representations of crime in literary and non-literary material, 50 marks, 20% of A level

ENGLISH LITERATURE A LEVEL

A Level Exam Board: AQA
Contact: Mr Josh Beal

A level English Literature explores the art of storytelling and the ways in which it examines many of life's fundamental themes: love, prejudice, loneliness, perseverance and inequality to name but a few. English Literature students learn to become critical thinkers by applying different lenses and critical theories to the texts studied as you consider varying interpretations. The subject requires students to read independently, perhaps considering how a text may be examined through a variety of lenses, including Feminism, Eco-Criticism and Marxism. This specification for English Literature provides and encourages the opportunity for wider reading through the two year course.

Paper 1: "Aspects of Tragedy"

In this topic, students explore flawed tragic heroes and heroines in Othello, Death of a Salesman, and selected poems by Keats. They will analyse how tragedy unfolds, focusing on narrative structure, violence, revenge, and the journey towards death. The course examines how language heightens tragedy and how these texts reflect on the human condition, moving the audience through emotions such as pity and fear.

Paper 2: "Elements of Crime Writing"

In this unit, students explore how crimes drive the narrative in Atonement, The Murder of Roger Ackroyd, and selected Victorian crime poems by Browning, Crabbe, and Wilde. They will examine different types of crime stories, such as detective fiction and narrative poetry, and how crimes like murder, theft, and betrayal are portrayed. Students will analyse criminal motives, the role of detectives, and themes of guilt, forgiveness, law, and morality, while considering how these texts create suspense and reflect ongoing societal issues.

Non-Exam Assessment: "Theory and Independence"

Students choose their own texts for this unit to explore various critical approaches to literature. This covers narrative, feminist, Marxist, aesthetic,

eco-critical, and post-colonial theories. Students analyse two texts—one poetry, one prose—each linked to a different theory and write an essay or re-creative response for each one.

Where can English Literature take me?

The study of English can give you a deep insight into why writers write and how they achieve their effects upon the reader. This may lead you into a lifelong love of the written word and you may wish to study English Literature at a higher level. English Literature is widely regarded by top universities as a very good qualification to show depth of knowledge and excellent application to learning. It also allows you to access careers in Journalism, Media, Drama, Publishing, Editing, Law, History, Television and Teaching; the field really is wide open when you have a qualification in English Literature.

Entry requirements

Grade 6 or above at GCSE is required. An enjoyment of reading, an understanding of analysis, and a desire to make sense of abstract concepts are all useful.

Possible subject combinations

The writing skills developed in English Literature work well alongside other subjects that require similar writing skills such as History, Politics and Psychology.

Assessment

Students will do one piece of coursework (20%) and sit two exams on the genres of Tragedy (40%) and Crime Writing (40%)



GEOGRAPHY A LEVEL

A Level Exam Board: AQA
Contact: Mr David Hartley

Geography fascinates and inspires. It is everywhere, it is the beauty of the earth, the terrible power of earth-shaping forces, viewed on the news that nourishes our curiosity and draws upon our empathy. Geography takes us out of ourselves. The subject attracts an enthusiastic and diverse group of students each year, who respond to the contemporary, real life nature of the subject and the academic issues that arise from them.

The topics are interesting, varied and directly relevant to the real world. Indeed, many of the major issues facing the world today, particularly young people in the coming decades, are explicitly covered within the Geography specification. The causes, problems and solutions of both rapid population growth and urbanisation, along with the impacts of natural hazards such as tsunamis, are just two of the topics covered. Geography at this level includes a high level of problem-solving and evaluation, and engages the theoretical, the real and the practical.

There are a number of day trips in Year 12 to aid students' understanding of the topics they are studying. You will carry out fieldwork investigations relating to the topics we study, gaining first-hand experience of fieldwork techniques. In addition, extra-curricular trips to locations such as Italy and Iceland form part of the course.

Possible subject combinations

Geography is a broad based academic subject, which will open up options for you in your future. Employers and universities see Geography as a robust academic subject that is rich in skills, knowledge and understanding.

Entry requirements

Grade 6 or above at GCSE (if taken). The study of Geography at A Level does require the ability to write clear, well organised, extended answers. Therefore, a sound command of English grammar is an advantage.

Assessment

Component 1: Physical Geography (includes topics from Component 1) (2.5 hours).

40% weighting of final qualification.

Component 2: Human Geography (includes topics from Component 2) (2.5 hours).

40% weighting of final qualification.

Component 3: Geographical Investigation: 3,000-4,000 words.

20% weighting of final qualification.

All students will complete a minimum of four days of fieldwork.



“Geography students are students of the world. We have studied new exciting topics that have broadened our horizons not only geographically but academically as well.”



HISTORY A LEVEL

A Level Exam Board: AQA
Contact: Mr Dean Gervis

History is an intellectually satisfying discipline. You will be required to think for yourself and to be questioning, not merely to be absorbent of information and knowledge. There are no right or wrong answers in History; all answers can in their own way have a measure of truth in them, but the best ones demonstrate real understanding and are convincingly argued. You will be expected to arrive at your own conclusions.

An excellent History essay is a clear, logical, well-organised and persuasive statement about a highly complex situation. If you can achieve this, not only have you an accomplishment to be proud of, you have a skill which will be of service in almost any walk of life.

The study of History will develop your communication skills, planning and organisational skills, team work and problem-solving skills.

At the heart of your A Level you will study The Weimar and Nazi Germany in depth, Britain during the Tudors and Europe 1855-1955.

Every year we organise exciting and informative trips. We have also run trips to Washington DC. The subject also benefits from the influential politicians and academics that regularly visit Trent for lectures and talks.

Entry requirements

Grade 6 or above at GCSE History.

Where can History take me?

History is a well-respected degree that opens up a variety of career options. If students did not want to go on to study History at University, a History A Level is excellent preparation for a law degree or any subject where analytical and/or essay writing skills are important.

Studying History is also a great pathway to the study of Politics, International Relations, Sociology, Journalism or History. Many careers require the skill of writing and presenting reports and prospective employers consider historians particularly accomplished in these areas.

Possible subject combinations

History works well with a large number of subjects. It can complement subjects such as Politics, English and Economics, although often students who take History do so alongside Sciences to maintain one essay-based subject.

Assessment

Coursework on Russia 1855 - 1953: 20% of the final qualification.

Examination on each of the other topics: 80% of the final qualification.

“History is not just a subject; it is a series of fascinating stories and connections which affect the world around us today.”

MATHEMATICS A LEVEL

A Level Exam Board: Edexcel
Contact: Mrs Caroline Howat

The A Level Mathematics course provides an opportunity for you to develop a further interest in the subject by extending your knowledge through the introduction of new techniques and development and practise of your mathematical skills. In addition to Pure Mathematics, the course also looks at some of the applications of Mathematics in Mechanics and Statistics.

This covers work on topics such as:

Pure	Trigonometry, Coordinate Geometry, Calculus, Algebra, Vectors, Proof and Numerical methods.
Statistics	Interpretation of data, probability, discrete and continuous distributions, hypothesis testing.
Mechanics	Kinematics, Newton's Law, friction and statics.

Entry requirements

GCSE Maths at Grade 7 or above is strongly recommended. A student with a Grade 6 will be required to discuss their decision with the Head of Mathematics.

Possible subject combinations

Mathematics sits well with almost all other subjects across all disciplines. It is the language of most sciences and gives an excellent combination with Art, Music, Modern Languages, Economics, Geography and History.

Where can Maths take me?

Developing your mathematical literacy is always a worthwhile activity but, perhaps more importantly, A Level Mathematics can be helpful for entry to a wide variety of degree courses. Mathematics may be highly desirable or even essential for admission

to Computer Science, Engineering, Mathematics, Physics, Statistics, Product Design and Economics courses. It can also be recommended for entry into the fields of Accountancy and Finance, Architecture, Biological Sciences, Chemistry, Business, Geophysics, Psychology and Quantity Surveying among many others.

Assessment

The A Level course is assessed by means of three 2 hour assessments.

Paper 1: Pure (1/3 of final qualification)

Paper 2: Pure (1/3 of final qualification)

Paper 3: Applied (1/3 of final qualification)

Calculators are permitted in all examinations and our suggested model is the CASIO fx-991CW-W or CASIO fx-CG50. Students should check with their teacher before purchasing any other model.



FURTHER MATHEMATICS A LEVEL

A Level Exam Board: Edexcel
Contact: Mrs Caroline Howat

Further Mathematics is taken as a fourth A Level alongside A Level Mathematics. It is rather more challenging than single A Level Mathematics and a genuine interest is necessary to follow Further Mathematics very intensively over the two years.

The course further develops ideas met in A Level Mathematics and also brings in new content including Complex Numbers and Matrices. Further optional units in either Pure or Applied Mathematics are also covered but the exact combination of units will be decided based on the make-up of students on the course. It is an excellent grounding for a university course featuring higher mathematical content and some universities see it as a significant advantage to have followed this course.

Entry requirements

A grade 8 or 9 at GCSE Maths would be highly desirable for this course.

Possible subject combinations

Further Mathematics complements the majority of subjects but particularly supports the Sciences and Economics.

Where can Maths take me?

Many students who study Further Mathematics go on to study degrees in Mathematics, Sciences, Engineering, Computer Science and Economics.

Assessment

The A Level course is assessed by four 90 minute papers.

Paper 1: Core Pure (25% of final qualification)

Paper 2: Core Pure (25% of final qualification)

Paper 3: Option 1 (25% of final qualification)

Paper 4: Option 2 (25% of final qualification)

Calculators are permitted in all examinations and our suggested model is the CASIO fx-991CW-W or CASIO fx-CG50. Students should check with their teacher before purchasing any other model.

MODERN LANGUAGES A LEVEL

(French, German, Spanish)

A Level Exam Board: AQA
Contact: Ms Angelique Lebat

Solid language skills are crucial for enterprises' ability to remain competitive in an increasingly globalised and mobile economy. Those who speak modern foreign languages are liable to be key players. Already, language graduates have one of the highest employment rates of any subject, as the ability to communicate in a foreign language and understand foreign cultures is highly prized by employers.

In addition to these arguments for pursuing language learning to the limit of one's ability, are the more traditional – but no less valid – attractions of language learning: communication with others on a personal and social level; the exploration of foreign cultures, their literature and their philosophy; the greater rewards to be had from foreign travel when you speak the language.

Entry requirements

GCSE grade 6 in the appropriate language is the minimum requirement and a grade 7 is strongly advised.

Where can Languages take me?

Languages at A Level can lead to a variety of university courses and careers. Traditional language degree courses place more emphasis on literature but you can also find courses which will allow you to pursue your interests in a whole range of subjects such as History of Art, Politics, History, Economics, Law or Philosophy.

Possible subject combinations

An A Level language complements well all Arts and Social science subjects (e.g. English, History, Business Studies, and Politics) and are an equally sensible choice to contrast with subjects of a scientific or technological nature.

Assessment

Paper 1: Listening, Reading and Writing—50% weight of final qualification.

Paper 2: Writing—20% weight of final qualification. Written response to the study of a book/play and a film.

Paper 3: Speaking—30% weight of final qualification. Topic discussion and presentation of an individual research project (IRP).

MUSIC A LEVEL

A Level Exam Board: Edexcel
Contact: Mr Nick Parrans-Smith

Music performance

An expressive arts subject, the ability to express ideas and convey them to other people is of obvious value in later life. Performing forms an integral part of the A Level Music course, and students have the opportunity to perform a short recital (A Level minimum eight minutes) at a minimum of Grade 6 standard on any instrument.

Music composition

Music A Level demonstrates your creative side, manipulating a listener's emotions and telling stories through the development of original ideas. You will compose a minimum of six minutes' music at A Level, which includes composition to a brief set by the exam board, and a techniques paper, featuring a choice of Bach chorales, 2-part counterpoint, arranging and remixing.

Music as a science

The analysis of set works taken from a wide range of musical traditions as set by the exam board are assessed in listening examinations. Composers include J.S. Bach, Clara Schumann, Kate Bush, Danny Elfman, Bernard Herrmann, Courtney Pine, and The Beatles, so there is something for everybody to enjoy. As well as developing extended writing techniques, data analysis and synthesis skills are demonstrated, alongside a study of the historical, sociological and political landscapes that surround composers and their music.

Entry requirements

Grade 7 practical ability (or the equivalent), and a good working knowledge of musical notation. GCSE study is not specifically required, although a theoretical qualification the equivalent of Grade 5 Theory would be expected as a substitute."

Possible subject combinations

Music is a complementary subject regardless of your option choices. There is a tradition of musical study amongst medical and law graduates. However, Music and Languages (both foreign and English), Music and Maths, Physical and

Social Sciences, and Humanities subjects are all very solid combinations. Music Psychology is a burgeoning area of research at the moment, as the power of music on the developing mind is explored further.

Where can Music take me?

Music is very highly regarded by Higher Education institutions and employers alike; this is due to the myriad of skills you have to demonstrate, and other than further musical study musicians go on to be successful in an exciting range of professions, including Law and Medicine. Music Education is a popular field, but Music Psychology, Music in combination with Languages, Philosophy and other Humanities disciplines, as well as more obscure courses to do with instrument design are becoming ever more popular.

Music is also an important part of extra-curricular life at university and in the wider adult community, with A Level Music giving a firm foundation for years of enjoyment after school. Several A Level musicians have received scholarships for their further study at top level institutions and conservatoires in recent years, including the prestigious organ scholarship at Queen's College, Oxford University.

Assessment

Performing: Non-examined assessment: externally assessed. Minimum of eight minutes of public performance, recorded on or after 1st March in the year of submission—30% weighting of final qualification.

Composition: Non-examined assessment: externally assessed. Two compositions, with at least one set to a brief by the examination board. Minimum duration six minutes—30% weighting of final qualification.

Appraising: Written examination (two hours) covering areas of study, dictation, and two essays—40% weighting of final qualification.

“Music sits really well with my other subject choices. The performing and composing aspects have given me the chance to show my creativity.”



PHOTOGRAPHY A LEVEL

A Level Exam Board: AQA

Contact: Mrs Kate O'Hare

Students considering Photography A Level are encouraged to develop an appreciation of the visual world, and to record what they see using a variety of lens-based and camera-less techniques.

You will carry out both theoretical and practical investigations. You will develop a specialist vocabulary, learn about the visual elements and their integral part in good photography, carrying out research into artists and photographers, to inform the development of your own ideas. Technical aspects such as full use of digital and film cameras are part of the course. You will learn how to develop your ideas and to create sophisticated and well-informed outcomes.

Personality, drive, resourcefulness, a strong work ethic and individuality are highly valued and staff will work closely with you to create challenging, exciting and thought-provoking work. The course is highly structured, yet allows for individual creative development and personal expression.

Where can Photography take me?

Many of our Art and Photography students have used the high grades they achieved to pursue studies in a wide range of different courses including Maths, History and Sciences at top universities. The A Level course in Photography is popular with students who enjoy Photography and who are looking for a course which allows them to learn quickly and be creative. Our photographers have gone on to careers in photography, editorial photography and careers in graphic communication. It would also be an ideal complement to A Level Art, for those students aiming for a career in any aspect of Art and Design and Media.

Possible subject combinations

Photography will combine well with all subjects, either to add breadth to A Level study or alongside A Level Art, to allow students to go on to further specialised Art and Design courses.

Assessment

Year 12

Year 12 will be spent learning the technical aspect of photography and then starting their first creative project.

Year 13

Year 13 students will begin Component/Unit 1: The Self-Identified Brief, which is a practical body of work supported by a 1,000–3,000 word essay. In February, students will receive their Component 2 exam paper and select a starting point, creating a body of work which leads towards a ten-hour exam in which to create a final outcome. Each of these projects is marked as a whole, with Component 1 worth 60% and Component 2 worth 40%.

PHYSICAL EDUCATION A LEVEL

A Level Exam Board: AQA

Contact: Mr Mark Powell

The focus of the A Level Physical Education (PE) course is on participation and performance in physical activity as part of a balanced, active and healthy lifestyle. Students who have an interest in Sport Science and health will find A Level PE to be both fascinating and challenging.

Areas of study

- Applied anatomy and physiology
- Skill acquisition
- Sport and society
- Exercise physiology
- Biomechanical movement
- Sport psychology
- Sport and society and the role of technology in physical activity and sport

Entry requirements

Grade 6 in GCSE PE (if taken) is a minimum requirement. Students are expected to have achieved success at GCSE in the Sciences. Students must play representative 1st Team sport at school and or club level in one discipline.

The sporting commitment must be throughout the duration of the A level PE course to support year 13 practical marks.

Possible subject combinations

Any combination of subjects are suitable – PE sits well with both Humanities and Science; Biology, Geography, Business, Psychology, Drama or Art.

Where can PE take me?

Any pupil wishing to undertake a higher qualification in Physical Education, Sport and Exercise Science, Physiotherapy, Leisure Studies or Recreational Management would find A Level PE to be very valuable indeed. It is also important to state that the vast majority of universities will now

accept this A Level as a qualification to any course.

Assessment

Paper 1: Factors affecting participation in physical activity and sport (2 hours)

35% weighting of final qualification.

Paper 2: Factors affecting optimal performance in physical activity and sport (2 hours).

35% weighting of final qualification.

The practical module will be assessed by an external moderator during the Lent Term of Year 13.

30% weighting of final qualification.

Practical performance in one sport 15%.

Written coursework about one sport 15%.



PHYSICS A LEVEL

A Level Exam Board: AQA

Contact: Mr James Cottell

Physics helps us to understand the world around us. From the swirl of milk in a cup of coffee to the swirl of the arms of a vast galaxy, the equations and concepts that underpin the universe can be explored and explained to reveal the connections in all things.

At A Level, Physics students begin to probe deeper into a wide range of concepts with the course covering: Particle & Quantum Physics, Waves & Optics, Linear Mechanics & Circular Motion, Electricity, Fields, Nuclear & Thermal Physics and Astrophysics.

Students often seek to study Physics for the challenge it can provide but most recognise that the analytical and problem solving skills they will develop on the course will be of benefit in their other subjects as well as their later study.

Entry requirement

A grade 6 in GCSE Physics (or a grade 6-6 in GCSE Double Award Science) is a minimum entry requirement for A Level. Pupils with a grade 7+ are much more likely to be successful and a grade 8 at GCSE is recommended should you wish to take this subject without one of these supporting Science/Maths subjects.

A grade 6 in GCSE Maths is essential but a grade 7 is preferred.

Possible subject combinations

Although Mathematics is a popular choice for Physics students, there is no requirement for them to take it; all of the necessary skills will be taught as part of the Physics course. Many students choose Physics in support of applications for medical courses at university with others choosing the science to demonstrate their analytical skills alongside humanities subjects.

Where can Physics take me?

Physics graduates are often at the cutting edge of new technologies and products that the world did not think possible. With Physics graduates involved in all sectors, from engineering and electronics, to government and policy, to finance and law, the opportunities that are open to those who have studied the subject are endless. Those completing an A Level in Physics today may be involved in developing technology or working in industries that have not even been invented yet.

Whatever the future holds, the problem solving, researching and communication skills acquired through the study of Physics are transferable to all areas of further study and employment.

Assessment

The full A Level assessment consists of three papers, each 2 hours in duration. Alongside the terminal examinations, students are judged against the Common Practical Assessment Criteria (CPACs) during 12 required practical experiments over the two-year course.





POLITICS A LEVEL

A Level Exam Board: Edexcel
Contact: Mr Calum Setterington

What a time to be studying A level Politics! At the start of your course, there will be relatively new governments in both the United Kingdom and the United States, navigating their way through a myriad of complicated domestic and international issues. There is no better time to study A level Politics.

What is the Electoral College and why is it so important? Why did the US Presidential Election result take so long to come in? What was the issue with the 'mail in ballots' in the US Presidential Election? What could a second Trump term look like? What is 'Devolution'? What does the House of Commons do? What is the United Kingdom likely to look like after Brexit? How does Politics affect me? These questions and issues are addressed as part of the course.

Politics is everything, and everywhere. It affects your education, the healthcare you receive, the level of taxation you pay and influences how the United Kingdom interacts with other countries around the world. On a two-year rotation, we have core course trips to London (Houses of Parliament, UK Supreme Court & Government Departments) and the University of Hull A level Politics conference. We are also exploring the opportunity to visit Washington DC and New York in 2025-26. We take great pride in supporting students to gain work experience in Politics and introducing them to MPs, Lords, journalists, civil servants and leading academics in their field. We have an active Senior Current Affairs Society which meets weekly to discuss UK and world events.

Entry requirements

A keen interest in current and world affairs is essential. Students are required to have a grade 6 at GCSE in English and/or History.

Where can Politics take me?

Politics develops strong communication, analytical and evaluation skills, which prepare students very well for areas like Law, Civil Service, Intelligence Services, the military teaching, large organisations (including charities) and business. Equally, it can be seen as a challenging and fascinating area of study that brings each student valuable skills and insight into the workings of the 'real' world.

Possible subject combinations

History, Religious Studies, English, Psychology, Economics, Business.

Assessment

There are three exams in A Level Politics, each worth a third of the total qualification. Two exams are on UK Politics and Political Ideology. The third exam is on American Politics.

PSYCHOLOGY A LEVEL

A Level Exam Board: AQA
Contact: Mrs Vi Gandhi

Psychology is the scientific study of behaviour, cognition and experience.

The specification takes a broad view of Psychology by covering all core areas within a traditional approach, whilst allowing for the study of some of these in greater depth at A Level. In the first year of study, you will explore the research methodology used in Psychological investigations and the various approaches to Psychology. We will cover the Psychodynamic, Behaviourist, Cognitive, Humanist, and Biological approaches to understanding human behaviour. In Year 13, you will develop a deep understanding of three behaviours (Relationships, Aggression and Stress or Schizophrenia). Finally, we will complete the course by examining the wider issues surrounding the subject.

This syllabus has been chosen because the specification was designed to provide a broad introduction to the scope and nature of Psychology as a science. The emphasis is on applying knowledge and understanding rather than just acquiring knowledge, thereby developing your transferable skills of analysis, evaluation and critical thinking. The specification offers a broad range of topics, with research methods in context.

Entry requirements

A minimum grade 6 in GCSE English and a Science subject. Students need to be comfortable with the scientific approach, interpreting simple statistics and be able to write clear, concise and well organised essays.

If you are interested in the systematic and scientific study of people's behaviour and the physiological and cognitive processes that underlie it, then Psychology could be the subject for you.

Where can Psychology take me?

Insights gained from studying Psychology are especially useful to those considering careers in medicine, education, social work, law or management. A Level Psychology is never required for entry to a degree course, but many students find that studying at this level gives a useful insight into the subject and helps them decide if they will be suited to studying Psychology at degree level.

Possible subject combinations

Psychology combines well with a variety of subjects and is particularly useful for providing breadth to a portfolio that is otherwise all arts or all science subjects.

Assessment

At A Level there are three exams, each accounting for one third of the A Level. The three exams last 2 hours and are worth 96 marks each. The exams consist of multiple choice, short answer and extended writing questions..



RS: PHILOSOPHY AND ETHICS A LEVEL

A Level Exam Board: OCR
Contact: Mrs Toni Ford

The study of Philosophy and Ethics at A Level is both engaging and academically rigorous. It provides excellent preparation for a wide range of courses at degree level. A level RS is sure to enthuse a passion for philosophy and ethics; such a fascinating syllabus that encourages you to look at the bigger picture.

The subject explores many of the philosophical and ethical theories which underpin our society today. An understanding of these ideas is essential to an informed insight into key themes in law, medicine, education, human rights and religion. Philosophy and Ethics at A Level offers a thorough grounding in philosophical and ethical issues, built on honing the ability to structure and formulate an argument, to express ideas with clarity by applying skills of logic and critical thinking.

The heart of the course lies with the pursuit of knowledge, truth and values. You will deepen your understanding of the modern world and of the place of religion within it. You will study a huge range of influential thinkers from Plato and Aristotle, to Augustine, Aquinas, Immanuel Kant, Karl Marx, Sigmund Freud, Richard Dawkins and Peter Singer to name but a few. The course comprises a dynamic blend of three main subject areas: Philosophy, Ethics and DCT.

Philosophy: You will examine 'what can we know, what can we prove.' You will learn about the classical schools of Plato and Aristotle, about traditional proofs for God's existence, responses to evil and suffering, ideas about life after death, body and soul. You will examine the nature of religious experiences and question the meaningfulness of religious language.

Ethics: You will study key ethical theories including Natural Law, Utilitarianism, Kant and ethics based on religion. You will apply these theories to issues surrounding medical ethics, sexual relationships and business ethics. You will question the existence of conscience and ask yourself if human behaviour is determined by heredity, environment and/or psychology.

Developments in Christian Thought: You will look at Christian responses to challenges posed by

secularism, pluralism, Marxism and feminism. You will consider the difference between knowledge, belief and revelation.

Entry requirements

Suitable for those who have studied RS to GCSE level and/or gained a grade 6 or above in an essay based subject.

Where can Religious Studies take me?

You will learn to analyse scholarly opinion critically and to think logically. Expressing ideas in a concise persuasive manner fundamental to many careers. Previous students have gone onto study; Medicine, Law, Business, PPE, Philosophy, Theology, Dentistry, International Law as well as the Arts and Humanities subjects.

It is recognised by both students and universities that this is a course that is both enjoyable and demanding, which will stretch and expand the minds of those who follow it. The subject is one which will significantly develop a student's academic written ability, and for that reason it is taken very seriously by admissions tutors, who regard it as an important part of the Humanities curriculum.

Possible subject combinations

Religious Studies is one of the fastest growing subjects nationally. This is because it is compatible with, and has a similar skills base to, subjects such as English, History, Sociology, Philosophy, and Government and Politics. Many students have also combined the subject with Chemistry and Biology going on to further study in Dentistry, Genetics and Medicine.

Assessment

The examination will consist of 3 examinations, each lasting 2 hours. In each exam candidates have to answer a variety of essay style questions, demonstrating knowledge and critical analysis. There is no controlled assessment or coursework.

SPORT BTEC

BTEC National Diploma Exam Board: Edexcel
Contact: Mr Mark Powell

Year 12

Two external assessments

Unit 1: Anatomy & Physiology (External Exam)

Unit 2: Fitness Training and programming for Health, Sport and Well-being (External Task). There will be options for a retake in Year 13 if required.

Unit 8: Coaching for performance

Unit 5: Application of Fitness Testing

Year 13

One external assessment

Unit 22: Investigating Business in Sport and the Active Leisure Industry (external Task)

Unit 3: Professional Development in the Sports Industry

Unit 4: Sports Leadership

Unit 23: Skill Acquisition in Sport

Unit 17: Sports Injury Management

Entry requirements

GCSEs at Grade 4 or above, which should ideally include English, Maths and Science.

Students should have an interest in sport and regularly participate at a minimum of recreational level.

Where can the BTEC National Diploma in Sport take me?

The BTEC National Diploma in Sport is designed to equip you with the knowledge, understanding and skills in the areas of sports science, sports development and coaching. Completion of this course could progress into full-time employment within the leisure industry or higher educational opportunities at university.

Possible subject combinations

- Biology A Level
- Geography A Level
- Psychology A Level

These are a number of the A Levels our present students are taking but any combination is suitable with the BTEC National Double Award (equal to two A Levels).

Assessment

This qualification will be available as an Extended Certificate (equal to one A Level) or as a Diploma (equal to two A Levels), depending on the number of units taken.

External examination on units 1 and 2, completed in the first year. Unit 22 exam in second year (for Diploma course). Retakes will be available.

Internal written coursework, across six units, over two years; roughly three assessments per unit and one assignment every fortnight. 65% weighting of final qualification.

Tel: +44 (0) 115 849 4950
Email: Admissions@trentcollege.net
Web: www.trentschools.net



TRENT
COLLEGE